

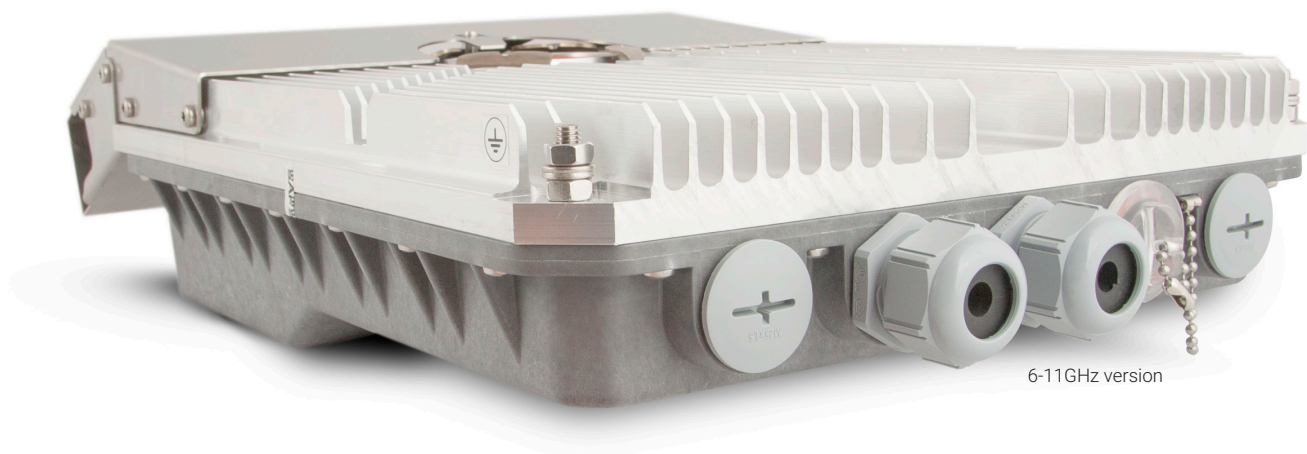


Integra-WS

carrier-grade microwave radio,
delivering up to 883 Mbps



- Integra-WS is specifically designed for use with wide channel bandwidths up to 112MHz and supports up to 1024QAM modulation for network upgrades.
- Full outdoor unit includes radio, modem, Ethernet network processor, and PoE splitter with surge arrestor.
- SFP ports for easy installation – choose single-mode or multi-mode fibre by changing SFP's, add fibre optic cabling later.
- High performance predistortion algorithm enables high Tx power performance.



Integra-WS is an unbelievably light, energy efficient carrier-grade system that exemplifies an outstanding return on smart engineering - the synergy of high competence in radio electronics and materials science. Slip-fit design allows integration with existing high performance antenna systems. Gigabit Power over Ethernet (PoE) port defines simple installation, while SFP slot enable fibre optic installation – giving the user ultimate flexibility in cable design.

| | |
|--------------------------------|---|
| Capacity | 883 Mbps at 112MHz 1024QAM 643 Mbps at 80MHz 1024QAM |
| Frequency bands | 6GHz, 11GHz, 15GHz, 17GHz, 18GHz, 23GHz, 24GHz, 26GHz, 28GHz, 38GHz, 42GHz and more* |
| Modulation | 4QAM / 16QAM / 32QAM / 64QAM / 128QAM / 256QAM / 512QAM / 1024QAM with Hitless ACM |
| Configurations | 1+0 |
| Channel bandwidth | |
| ETSI | from 56MHz up to 112MHz |
| FCC | from 40MHz up to 80MHz |
| Gigabit Ethernet | |
| | 1x RJ-45 - Management |
| | 1x RJ-45 or 1x SFP - Traffic |
| Service ports | |
| 3.5mm | Audible alignment and RSSI |
| USB B-Type | Terminal Access |
| LED | Power On, Link Synchronization, RSL |
| Ethernet type | Out-of-band multiplexer |
| Management | Out-of-band, SNMP v1/2c/3, SSH, Telnet, HTTPS, Serial, RADIUS, Network Time Protocol |
| Carrier Ethernet functionality | Transparent |
| Performance monitoring | Performance graphs, constellation diagram, alarms, detailed counters |
| Antenna type | External, Slip-fit |
| Form factor | 235 x 250 x 72 mm / 9.26" x 9.85" x 2.84", 2.9 kg / 6.4 lbs (15-42GHz) 280 x 437 x 100 mm / 11.02" x 17.2" x 3.9", 6.5 kg / 14.3 lbs (6-11GHz) |
| Temperature range | -33 ... +55 °C / -28 ... +130 °F |

* Please contact SAF Tehnika representative for more information



For more detailed information about SAF products visit www.saftehnika.com or contact your SAF representative info@saftehnika.com
Product features may vary between different models and configurations. They are subject to change without prior notice.

SAF Tehnika © 2017