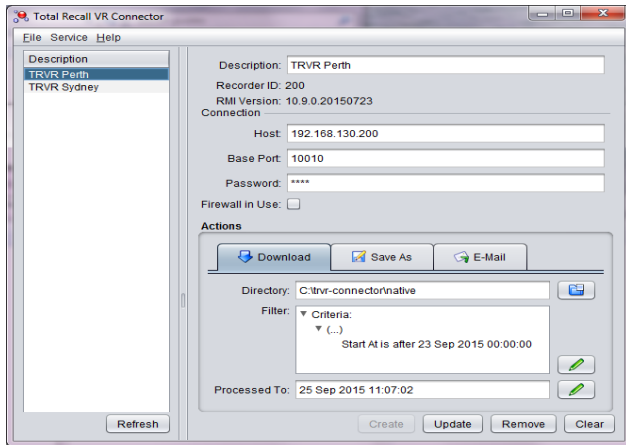


Total Recall VR Connector

Easily Integrate Total Recall VR with Other Systems

*Total Recall VR **Connector** is a combination of a Windows service and a GUI application, which combined provide the easy-to-use solution for users who need easy integration of Total Recall VR with business systems and cloud recording solutions.*



Total Recall VR Connector

Total Recall VR Connector designed for scenarios where Total Recall VR is used as an audio capture device to create recordings that are subsequently consumed by other business systems and cloud recording solutions or their users.

The service downloads recordings from multiple Total Recall VR systems in near real-time and delivers the recordings (and optionally the metadata for the recordings) to other business systems and cloud recording solutions in a user specified format.

The included GUI application provides for easy configuration and control of the service.

Total Recall VR Connector is a Java/Windows based application designed to run on a PC with a Windows 7, 8 or 10 operating system, or alternatively running Windows Server 2010 or 2012. To run the application you need to have a 32bit Java SE Runtime Environment installed. If you wish to export recordings in AMBE format (for example Tait DMR recordings) then you will additionally need to purchase an AMBE decoder license.



Total Recall VR Connector offers:

- Continuous, near real-time fetching (downloading) of calls from one or multiple Total Recall VR systems.
- Automatic exporting of calls from their native (secure) format to popular audio file formats (such as MP3 or WAV).
- Export call metadata to standard CSV format.
- Automatic delivery of recordings in their native format (or in popular audio formats) via email.
- Windows Service Operating Mode.



For more information, see
www.totalrecallvr.com

v4.2.0 11/15